

EXAMSLIDE™

High Performance Doors



Soft Close

Standard on all ExamSlide™ systems

Frame

Designed to protect wall opening

Sill

No exposed floor track

AD Systems ExamSlide™ was specifically designed to meet the rigorous demands of today's lean healthcare medical facilities. Constructed with the highest quality, commercial grade hardware and precision engineered framing system to provide years of trouble-free service.

ADA-compliant operation, along with 'soft-close' technology, ensures that patients of all ages and abilities can easily open and close the door. The AD Systems patent-pending acoustic mitigation system can seal all four sides of the door leaf, helping to maintain speech privacy standards.



Standard Features

AD SYSTEMS EXAMSLIDE™ STANDARD FEATURES:

- Space-saving design saves up to 30 sq ft, when compared to a swing door
- Heavy-duty, top-hung roller system for smooth, maintenance-free operation
- Patent-pending acoustic mitigation seals all four sides of the door to achieve speech privacy
(Field test indicates NIC Noise Isolation Class 39 as per ASTM E336-11)
- Soft-close dampening system
- Easy to clean aluminum frame system wraps and protects wall construction
- Optional UL 1784 smoke rating
- Standard or inset mount designs with sidelite and transom options

Options

HARDWARE OPTIONS:

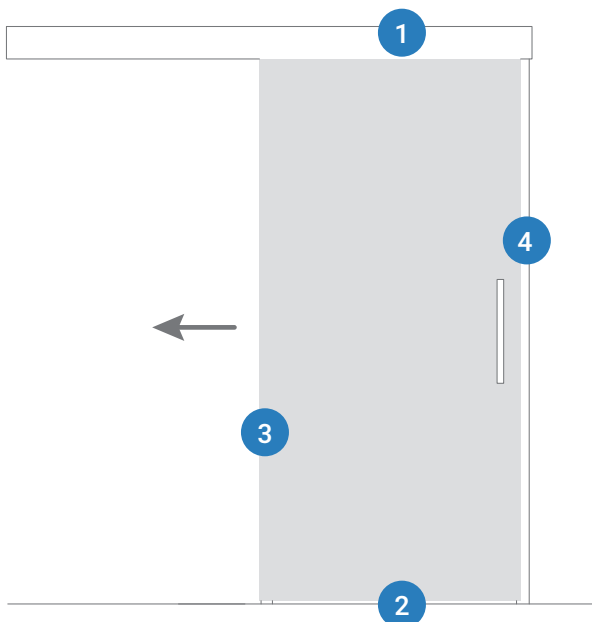
- ADA thumb turn lock with occupancy indicator
- Key locks
- ADA self-latching mortise
- Magnetic lock – key card/access control
- Single-action egress with lever
- Flush pulls and anti-ligature hardware

1-3/4" DOOR OPTIONS:

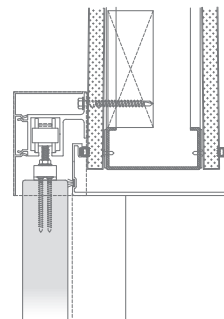
- Flush wood door or laminate door
- Wood stile and rail door with glass
- Aluminum stile and rail with glass
- Range of glazing and infill panel choices
- Lead shielding doors and glazing for X-Ray rooms

ELEVATION VIEW

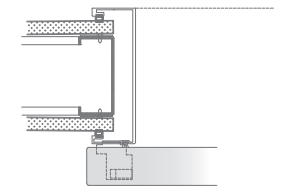
Opens to left



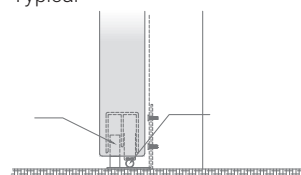
1 Head @ Opening
Typical



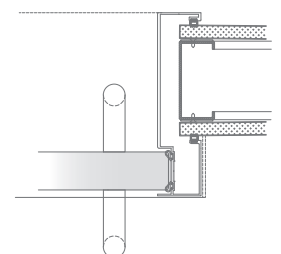
3 Jamb @ Sill Side



2 Door Sill
Typical



4 Jamb @ Pull Side
Typical





ADSYSTEMS
HIGH PERFORMANCE DOORS